

LEGEND

- IRON PIPE BOUNDPOST FOUND
- IRON PIPE BOUNDPOST SET
- IRON REBAR BOUNDPOST FOUND
- BOUNDPOST NOT FOUND THIS SURVEY
- ▲ CALCULATED UNMARKED POINT
- ▲ NAIL SET
- ▲ T-IRON FOUND
- CONCRETE MONUMENT FOUND
- UTILITY POLE

[N123°56'E - 12.34'] RECORD DATA WHERE DIFFERENT FROM MEASURED DATA

— PROPERTY LINE OF SURVEYED PREMISES

— EASEMENT LINE

— VEGETATION LINE

52 — CONTOUR LINE - 1' INTERVAL

50 — CONTOUR LINE - 5' INTERVAL

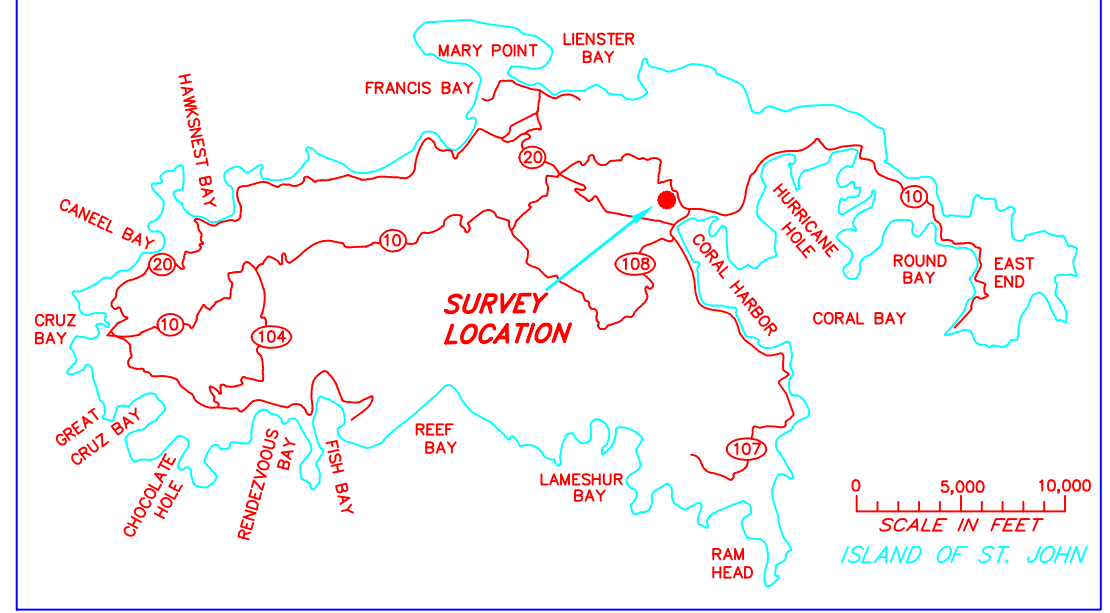
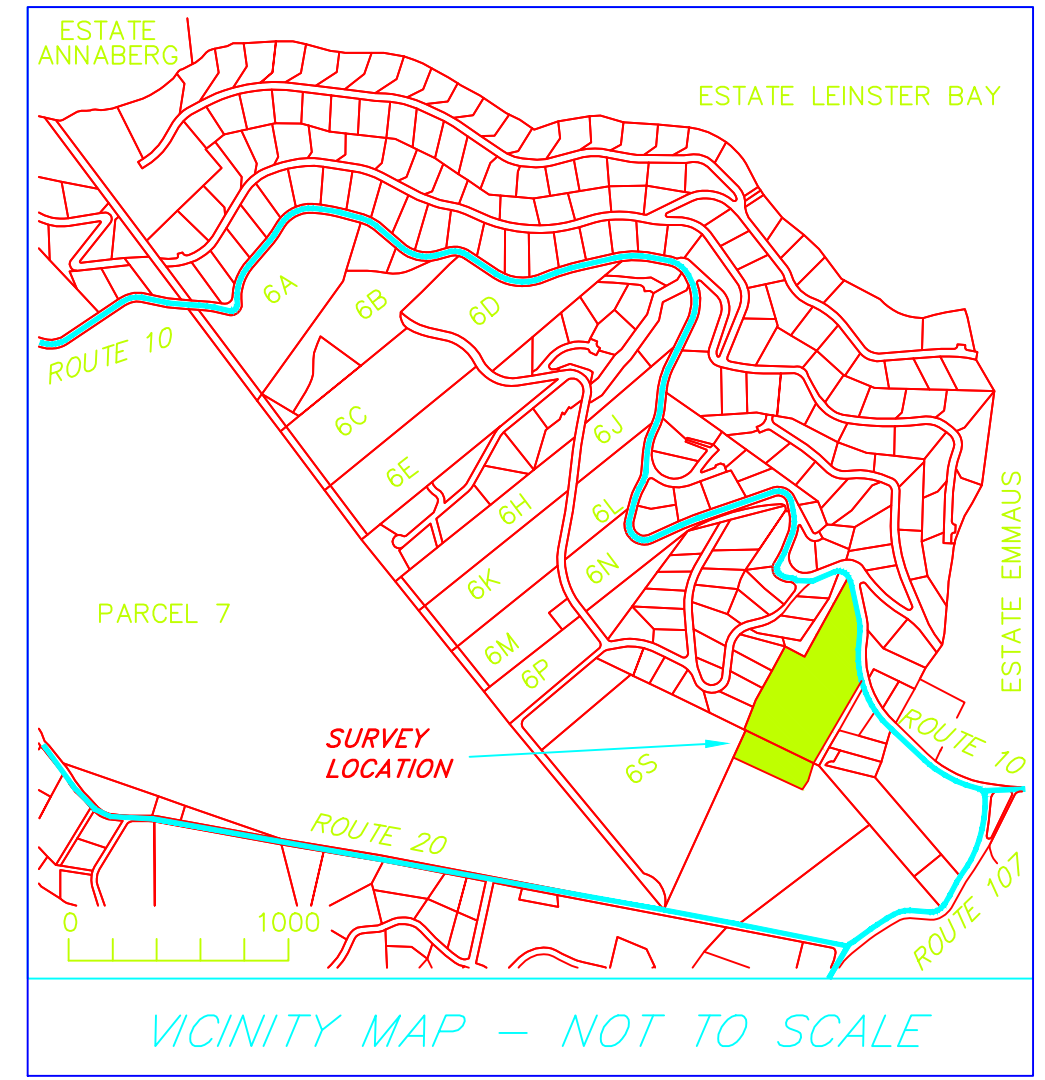
50 — CONTOUR LINE - 25' INTERVAL

— EDGE OF ASPHALT PAVEMENT

— EDGE OF DIRT ROAD

— FENCE

— TREE WITH TRUNK DIAMETER AND TYPE ELEVATION ON BOUNDPOST DATUM SCALED FROM U.S.G.S. MAP



Horizontal Scale: 1" = 40'

HORIZONTAL SCALE 1" = 20'

Drainage Maintenance 6-4 Carolina Coral Bay, St John, USVI		Topographic Survey	
Prepared for: Coral Bay Community Council	Date: 04/26/2011	CSL	Proposed by: Christopher S Laude, P.E.
8-1 Emmaus St. John, VI 340-776-2099	Project No: F2	Sheet 3 of 3	Stormwater - Civil - Planning
9901 Emmaus St. John, VI 00830 cheo@coralbaycommunitycouncil.com	Not To Scale		9901 Emmaus St. John, VI 00830 910-412-5900 cslau@emmc.com

Best Winters Land Surveyors Inc.
P.O. Box 1655, St. John, VI. 00831 (340) 693-9339

**TOPOGRAPHIC SURVEY
PARCELS 6-4 & 6R-2A
ESTATE CAROLINA
No. 1 CORAL BAY QTR.
ST. JOHN, V.I.**

ZONING: (340) 693-9339
SCALE: 1" = 20'
DATE: 8/20/2010
FIELD: CF/LB
RAW DATA: 0246.RWS
DRAWN: LB
DRAWING No. 0246T1